

LUXURY  
URBAN  
MARINA  
LIVING





...prime waterfront living begins.





# LUXURY URBAN MARINA LIVING. IT'S YOUR STYLE.

Located in the exclusive Keppel Bay precinct along Singapore's vibrant southern shores, Corals at Keppel Bay offers prime waterfront living with attractions at your doorstep. Get set for a life less ordinary.





## IDYLLIC WATERFRONT LIVING BY THE MARINA.



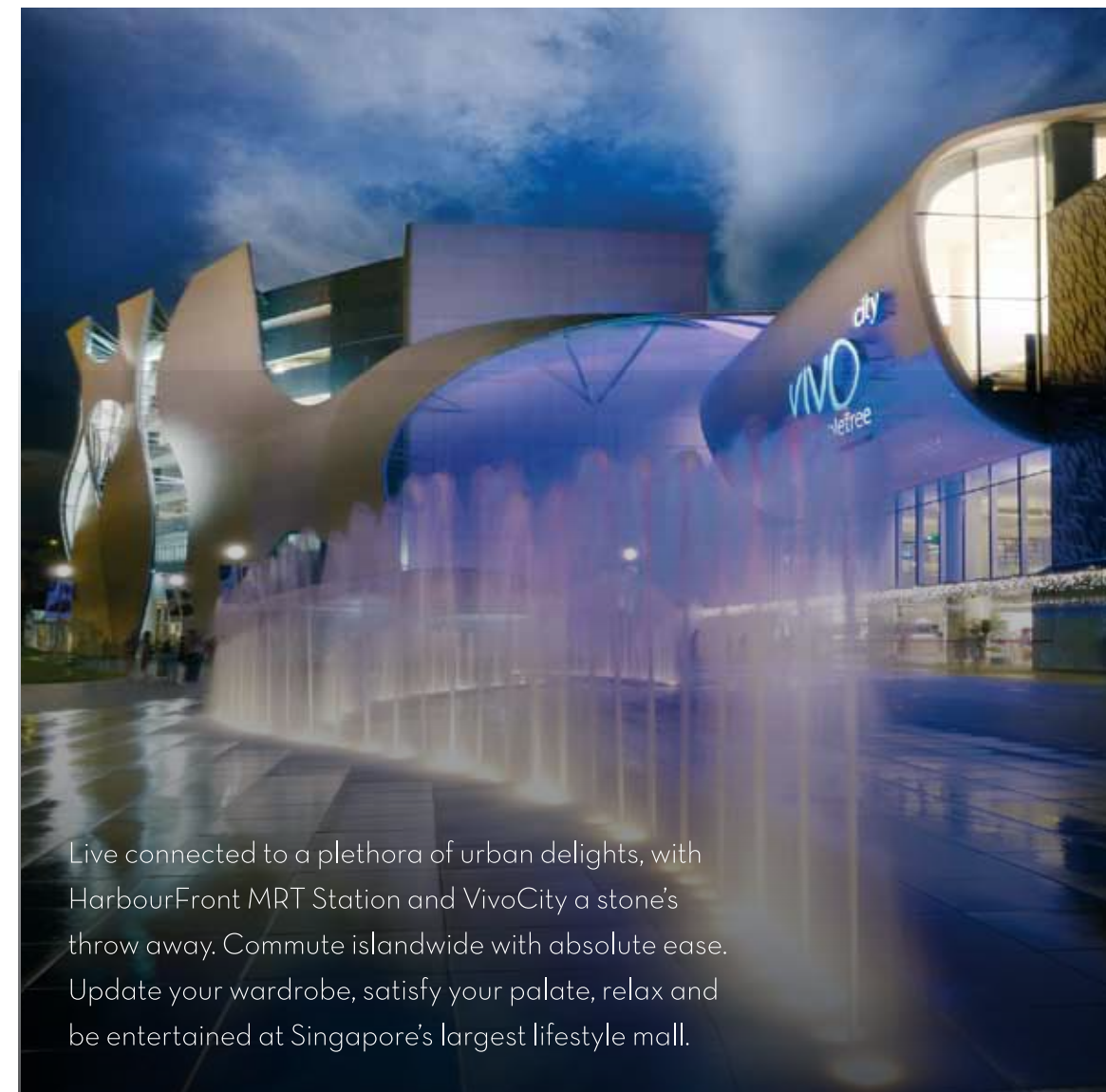
Right across from Marina at Keppel Bay, Corals at Keppel Bay offers homeowners an idyllic lifestyle in a picturesque setting. Wake up to sheer tranquillity, fresh air and magnificent views. Stroll across Keppel Bay Bridge and embark on ocean adventures. Or enjoy golden moments by the water as the day gives way to night.





# UNMATCHED CONVENIENCE. WORLD CLASS RECREATION.

Across Corals at Keppel Bay is Sentosa, home to Resorts World Sentosa, Universal Studios Singapore and many other enticing recreational venues. Lose yourself in the excitement of the theme park, gaming thrills, shopping pleasure, culinary delights and more!



Live connected to a plethora of urban delights, with HarbourFront MRT Station and VivoCity a stone's throw away. Commute islandwide with absolute ease. Update your wardrobe, satisfy your palate, relax and be entertained at Singapore's largest lifestyle mall.



Discover nature in all her splendour at Mount Faber, Singapore's iconic hilltop attraction. Enjoy invigorating walks, soak in the panoramic views, or dine to the unique sight of cable cars gliding across the sky. All in the backyard of your home.



Not to scale





Be whisked from the comfort of your home to the buzz of the Central Business District only minutes away by car, and as easily reached via the MRT.

Just as accessible is the famed shopping street Orchard Road, a veritable mecca for fashion and food connoisseurs from the world over.

# LIVE, WORK & INDULGE.

When night falls, pulses quicken. Revel the night away at St. James Power Station, a sprawling entertainment complex next to VivoCity. Soak in the air of *la dolce vita*, and chill out to some of the best 'live' music in town.



# A JEWEL BY THE SEA.

The work of renowned architect Daniel Libeskind, Corals at Keppel Bay lies by the water's edge, precious as a pearl necklace. With the open sea as a backdrop, this prized address is a delight to come home to every day.

Corals at Keppel Bay features a host of eco-innovations, and has been accorded GREEN MARK GOLD<sup>PLUS</sup> AWARD by the Building and Construction Authority for being a sustainable development.







Corals at Keppel Bay comprises 11 low- to medium-rise blocks. Contemporary in style and fluid in design, the blocks cascade toward the waterfront, offering residents inspiring views of the sea, the historic King's Dock alongside the development, and the lush central garden.

Artist's impression



## ANOTHER EXCEPTIONAL CREATION BY DANIEL LIBESKIND.

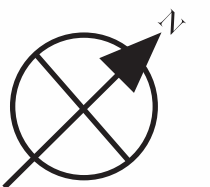
Celebrated architect Daniel Libeskind is known globally for his ground-breaking work. The daring and iconic Reflections at Keppel Bay - also by Keppel Land - was his first Asian residential showpiece. With Corals at Keppel Bay, he once again brings his design genius to prime waterfront living.





# SITE PLAN

- 1 Public Promenade
- 2 Dockside Promenade
- 3 Reflecting Pools
- 4 Water Gardens
- 5 Hydro Spa
- 6 Lounger Pool
- 7 50m Length Swimming Pool
- 8 Splash Pool with Jumping Jets
- 9 BBQ Party Pavilion
- 10 Clubhouse (Multi-Purpose Studio, Lounge, Function Room, Gym)
- 11 Al Fresco Terrace
- 12 Forest Walk
- 13 Entrance Gateway
- 14 Stepping Stones
- 15 Tennis Court
- 16 Children's Play Area







# WAKE UP TO PRIME RESORT LIVING.

With a host of pampering facilities spread across 420,000 square feet of landscaped grounds, amidst green and tranquil surroundings, every day at Corals at Keppel Bay is a bona fide treat for the senses.



The enjoyment is not confined to the facilities within – take a stroll, jog or cycle along the scenic promenade which fringes the development and connects to Labrador Nature Park. In the near future, a proposed walkway will link you directly to HarbourFront Centre.



From cooking up gastronomic treats at the outdoor dining pavilion, to entertaining in style at the lavish clubhouse, to lounging by the placid pool, living the good life comes naturally.





COME HOME  
TO PERFECTION.

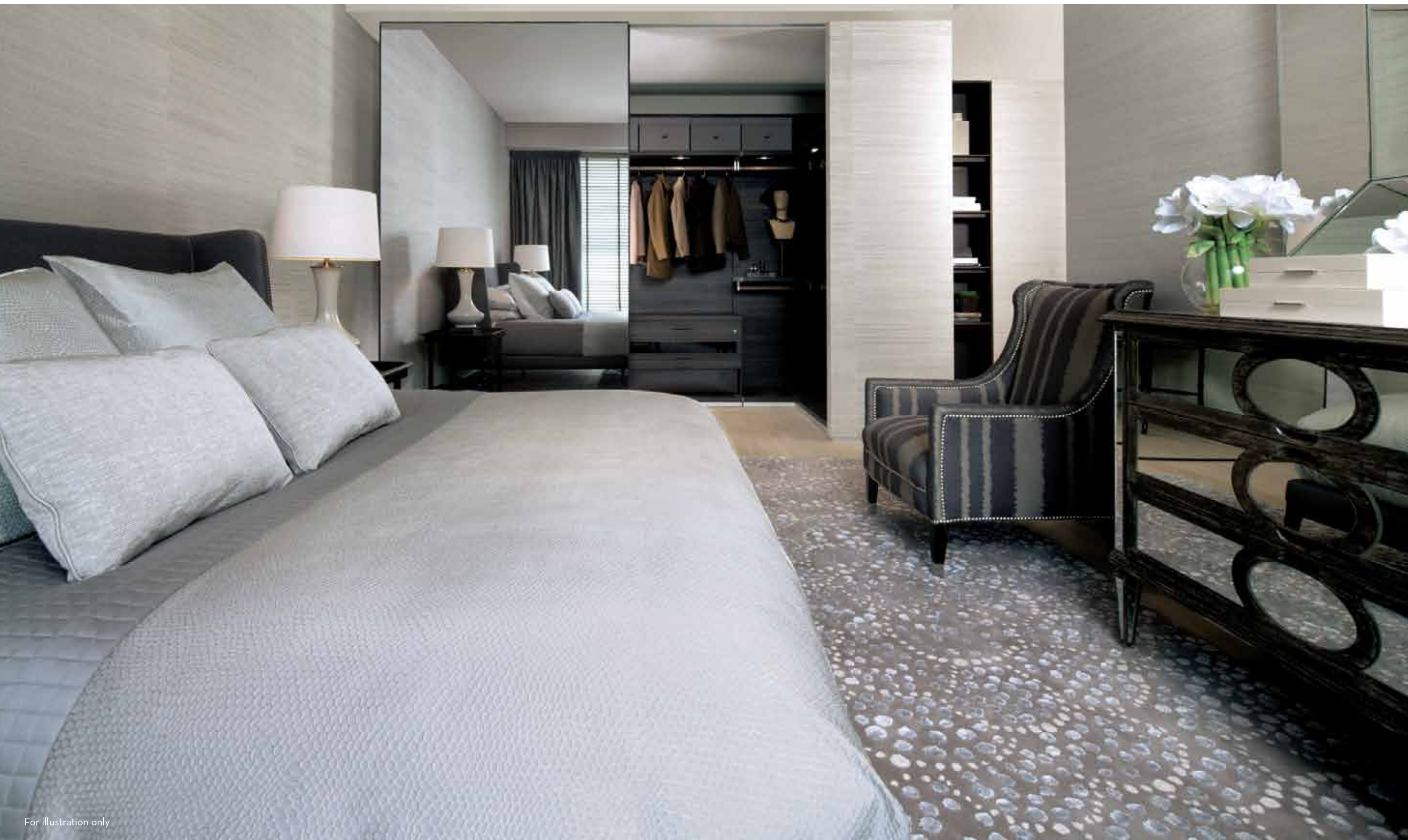




For illustration only

True luxury means indulging in only the best. This is manifested in every home at Corals at Keppel Bay. Each apartment features ultra-luxurious fittings, the finest materials and superb workmanship, to create the most splendid of living spaces.





For illustration only



For illustration only

Bedrooms come with state-of-the-art wardrobe solutions by leading Italian furniture company, Poliform. Bathrooms feature exquisite Zucchetti taps and shower systems, creating the most pampering bathroom experience ever.





Kitchens are fitted with designer cabinets by Poliform, seamlessly integrated with top-of-the-line De Dietrich appliances - from fridge and freezer, to oven, hob and hood. Cooking and entertaining has never been more pleasurable and easy.

For illustration only



# THE KEPPEL LAND PHILOSOPHY

We see property development as a life-touching, life-transforming business. We want to help build lives, realise dreams, and shape landscapes. And in doing so, set a new standard of quality living within Asia, one that is sustainable and answers modern urban needs.

Driven by our commitment to shape a better future, we challenge ourselves to constantly think and see things from a different angle. It is this unwavering approach that has helped us establish a portfolio of award-winning properties across Asia.

Our track record speaks for itself. We brought waterfront living to a whole new level with the iconic residences at Keppel Bay

and Marina Bay. We redefined Singapore's skyline and changed the face of business with landmark developments such as Marina Bay Financial Centre and Ocean Financial Centre.

As we look towards the future, we remain focused on providing urban living solutions through our core businesses of property development and property fund management. All while we continue to create live-work-play environments of enduring value for the community.

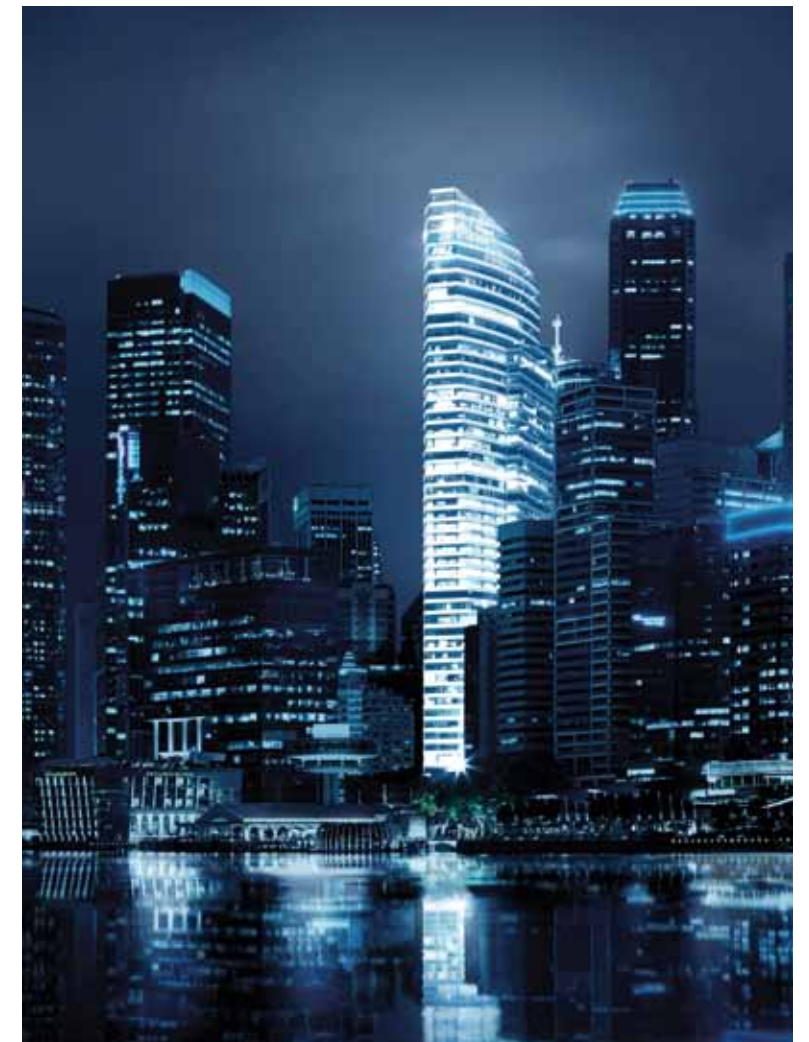
At Keppel Land, we call this 'Thinking Unboxed'.



Reflections at Keppel Bay



Marina Bay Suites



Ocean Financial Centre



SALES HOTLINE **+65 6270 6686** OR VISIT **WWW.CORALS.COM.SG**

Developer: Keppel Bay Pte Ltd • Developer's Licence No.: CO996 • Lot No.: 3493T Mukim 01 at Keppel Bay Drive • Tenure of Land: 99 years commencing from 26 February 2007 • Expected Date of Vacant Possession: 31 July 2018 • Expected Date of Legal Completion: 31 July 2021 • Building Approval Plan Nos.: A1182-00005-2000-BPO1 (15 January 2013), A1182-00005-2000-BPO2 (14 March 2013).

Whilst reasonable care has been taken in preparing the brochure and constructing the model and the sales gallery/showflat (the "Materials"), the developer and its agents shall not be held responsible for any inaccuracies in their contents or between the Materials and the actual unit. All statements, literature and depictions in the Materials are not to be regarded as a statement or representations of the fact. Visual representation such as layout plans, finishes, illustrations, pictures, photographs and drawings contained in the Materials are artists' impressions only and not representation of fact. Such materials are for general guidance only and should not be relied upon as accurately describing any specific matter. All information, specifications, plans and visual representations contained in the Materials are subject to changes from time to time by the developer and/or the competent authorities and shall not form part of the offer or contract. The Sale and Purchase Agreement shall form the entire agreement between the developer and the purchaser and shall in no way be modified by any statements, representations or promises (whether or not contained in the Materials and/or made by the developer or the agent) made. No part of the Materials shall constitute a representation or warranty. The floor plans are approximate measurements and subject to final survey. All rights reserved.